



SIDE HUNG DOORS

EAB's side hung doors and hot dip galvanized steel doors are primarily intended for industrial buildings and machine halls.



Built to last.®



SIDE HUNG DOORS THAT LAST

These side hung doors and access doors in hot dip galvanised steel are primarily intended for installation in facades and industrial environments. With their robust design the side hung doors will also come into their own as interior doors.

The doors are built with a frame of hot-dip galvanised tubular profiles that give the door leaf good stability. For example, the door remains functional in the event of damage to the cladding. Hinges and brackets for other fittings are welded to the frame structure. These properties make the gates and doors very durable and pave the way for a long service life with minimal maintenance. In terms of design, there is a lot of freedom of choice. Whether genuinely rustic in style or stylishly modern, we offer customised solutions to suit your business.



HIGH QUALITY FINISH

The solid construction makes our side hung doors very durable and guarantees a long service life with minimal maintenance. Robust design and a multitude of options with respect to execution results in a functional door with a high quality finish.

LONG SERVICE LIFE

A frame of hot dip galvanised tubular profiles gives the door leaf extremely good stability. Hinge and bracket for other fittings are welded to the frame structure. The steel cladding is screwed onto the door frame using our own special screws, which means that steel sheet is easy to replace if it becomes damaged.

10 YEAR GUARANTEE

We know that our doors will last and that they keep our promises. Therefore, a 10-year guarantee is always included regardless of the solution you choose. Each door is manufactured in our own factory in Smålandsstenar and we know the art of combining form, function and durability.



Wood-clad side hung doors with classic crosses.



Access door with silver coated profiled steel plate.



Side hung doors with a row of glazing.



Green lacquered profiled steel sheet and a row of glazing.



Side hung doors with black lacquered profiled steel sheet.



Grey-lacquered side hung doors in a barn environment.

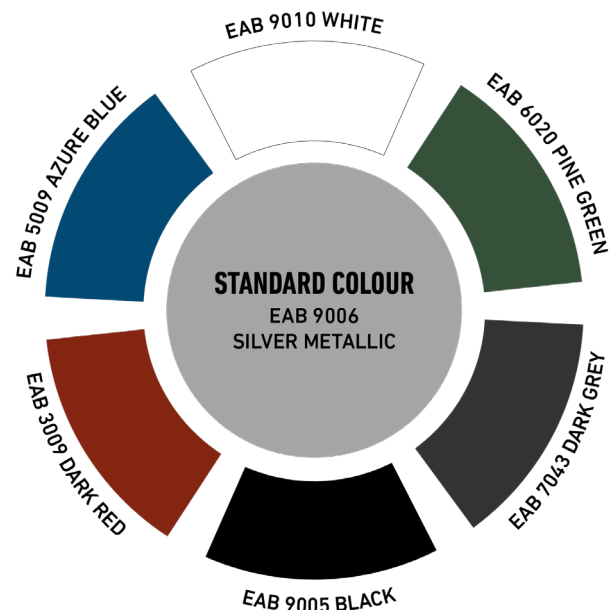
CUSTOMISE YOUR DOOR

At EAB we create concrete proof every day that a durable and functional door does not need to be boring. With 60 years' experience in door manufacturing, we know the art of combining design, function and durability. The options for customising your door are endless.

All our doors are hot-dip galvanised in their basic design and there are several different surface treatment options, depending on the environment in which the door is placed. Choose lacquered sheet metal as cladding, a fully glazed door that lets in natural light, or a wood-clad door for a more rustic feel. The colour and cladding are entirely up to you. **Would you like to find out more about our doors and how you can customise your own door? Scan the QR code or go to <https://www.eab.info/side-hung-doors>**



STANDARD COLOURS



FACTS

Design

EAB's steel side hung doors and access doors are frame-built from welded, hot-dip galvanised steel tubular profiles that can withstand tough conditions and can be realigned.

Door leaf

Hot-dip galvanised square tube frame. Clad inside and outside with silver lacquered EAB profiled steel sheet 9006 in the basic design, or coated with any EAB standard colour. Intermediate mineral wool insulation.

Frame

EAB manufactures and stocks frames in U- and L-profiles and square tubes.

Seals

All seals are easily replaceable.

Glazing

Supplied with insulating window D4-18 energy U 1.1, with strong strips of natural anodised aluminium. Other types of glazing are fitted on request.

Surface treatment

Option 1: Hot-dip galvanised door leaf frame clad internally and externally with silver lacquered EAB profiled steel sheet 9006.

Option 2: Hot-dip galvanised door leaf frame with lacquered sheet cladding according to our standard colour range.

Option 3: Paint treatment on hot dip galvanised door leaf frame and steel sheet cladding as per separate paint range.

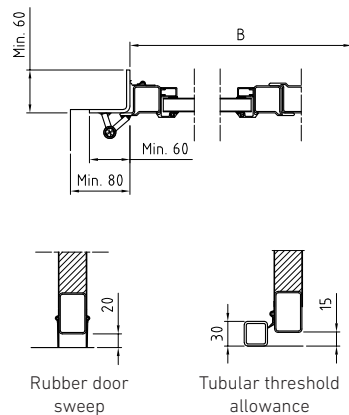
Fittings

- Welded lubrication-free hinges.
- Locking of the access door/wing with an Assa lock 410-50 excluding cylinder. Security pins and safety lock plates are included.
- Lever door handle EAB standard.
- Internal locking of double door section with DeJo 55100 espagnolette with eyelets for padlocks.
- Larger doors can be fitted with a recessed access door and lock according to the above. Other types of locks, door-closers, installation fittings, etc. are fitted upon request.

A SELECTION OF FRAMES

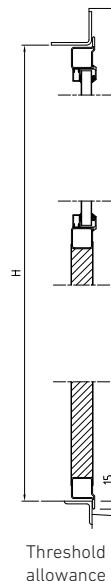
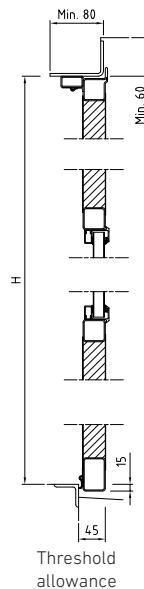
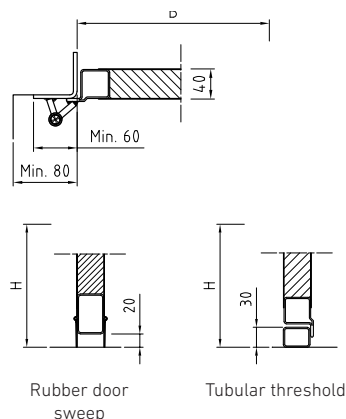
Side hung doors type SPN

- Recessed in frame, rebated
- Outward opening
- Maximum width 2,500 mm.
- Maximum height 2,500 mm.
- Frame types, see below



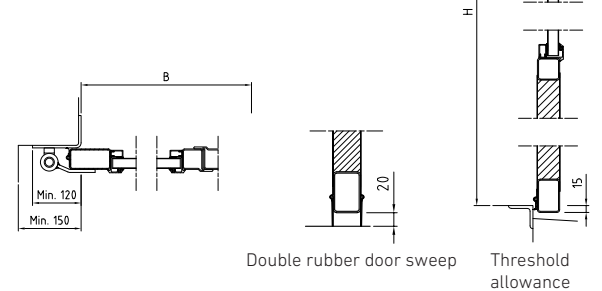
Access door type SPN

- Recessed in frame, rebated
- Outward opening
- Max width 1,250 mm
- Maximum height 2,500 mm
- Frame types, see below

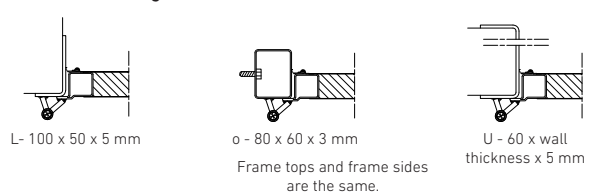


Side hung doors type SPU

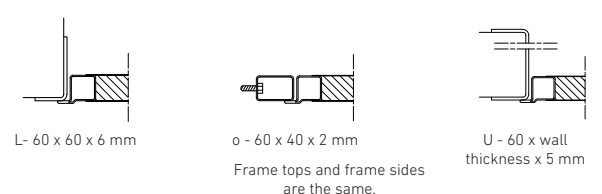
- Surface-mounted on frame
- Outward or inward opening
- Max width 3,000 mm
- Max height 3,500 mm
- Can be constructed as EAB-Thermodoor



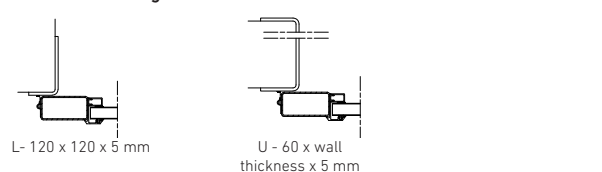
Frames side hung doors SPN



Access door frame



Frames side hung doors SPU



Built to last.*

STORAGE EQUIPMENT | DOORS | STEEL BUILDINGS
333 33 SMÅLANDSSTENAR | +46 371 340 00 | WWW.EAB.INFO

