



Conduct regular inspections to check for:

- \* correct application and use
- \* loads within allowable safe limits
- \* accidental damage, or dislodgement of structural component



**REPORT ALL DAMAGE TO THE "PERSON RESPONSIBLE FOR STORAGE EQUIPMENT SAFETY"**



Do not alter the structure without either:

- \* checking effects against manufacturers "technical data" or
- \* obtaining approval from supplier



**DO NOT CLIMB RACKING**



Refer to "EN 15635: Steel Static Storage Systems-The application & maintenance and use", and "EN 15620: Steel Static Storage Systems - Adjustable pallet racking - Tolerances, deformations and clearances"



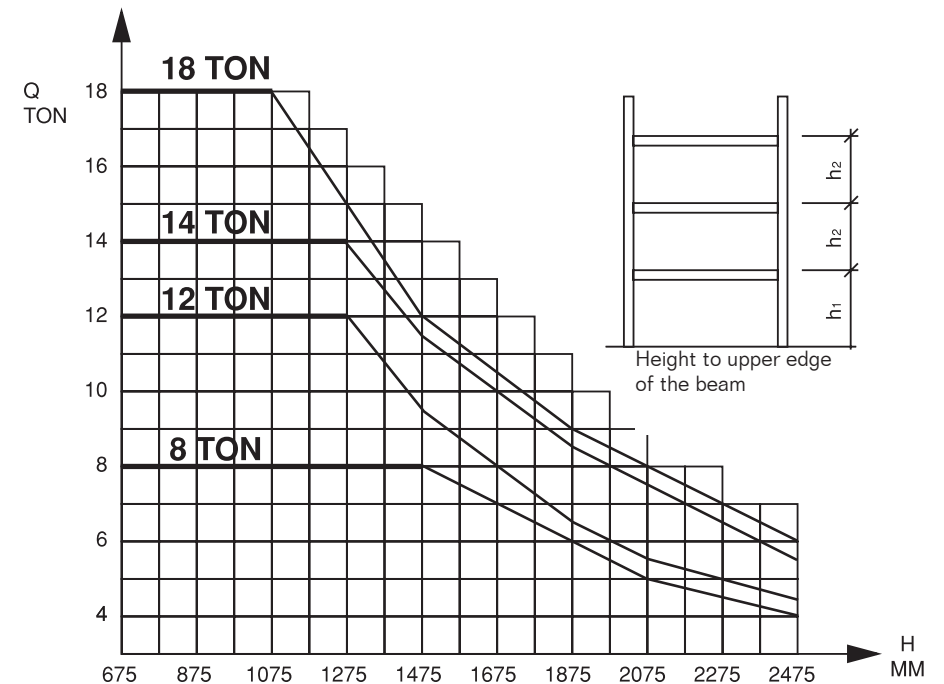
**If in doubt ALWAYS contact EAB**

## ALLOWED BAY LOAD for Pallet racking Alfa mounted on concrete floor

Type designation = Maximum load per section.  
The type designation is stamped on the front of the uprights at a height of 0.4 m above the floor level.

The permitted load per section depends on the positions of the horizontal beams, as shown in the diagram.

The maximum load per horizontal level is stamped on the beam.



$Q$  = Permitted load per section for  $H = h_1 = h_2$ .  
At least two horizontal levels. No back braces.

Contact EAB for information on other load conditions.



SE-333 33 SMÅLANDSSTENAR  
+46 371 34000 www.eab.info